

**TWYCROSS ZOO**

# **EDUCATIONAL OUTREACH PROGRAMME**



**Twycross Zoo**  
Atherstone, Warwickshire, CV9 3PX

[www.twycrosszoo.org](http://www.twycrosszoo.org)

[outreach@twycrosszoo.org](mailto:outreach@twycrosszoo.org)

Twycross Zoo - East Midland Zoological Society LTD - Registered Charity No. 501841  
Company registered in England and Wales Registered No. 01060956

# BRINGING THE WILD TO YOU



Twycross Zoo can bring conservation education to your classroom

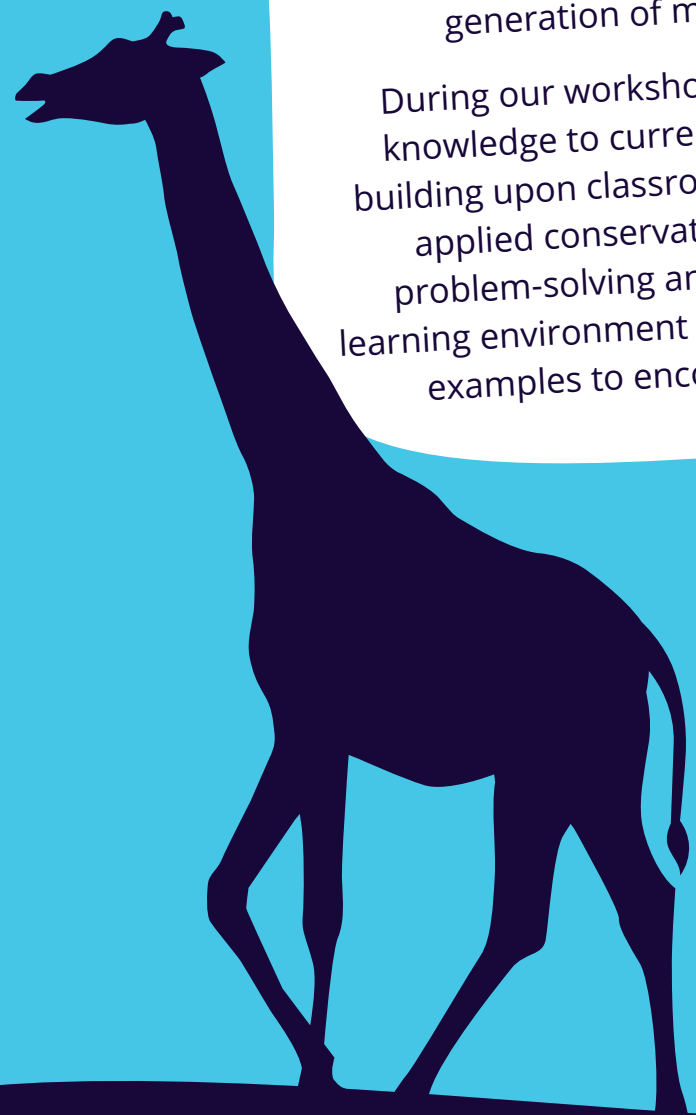
Help us to promote nature-connectedness amongst young people in the Midlands, by bringing conservation education to learners without them having to leave the classroom. Our outreach visits foster a curiosity and compassion for wildlife, with the aim to inspire a new generation of motivated, passionate conservationists.

During our workshops, learners will apply their cross-curricula knowledge to current conservation topics, contextualising and building upon classroom learning. Learners will be presented with applied conservation challenges, enabling them to practice problem-solving and critical thinking. We create an immersive learning environment using appropriate zoo artefacts and real-world examples to encourage engagement amongst all learners.

## Single Workshops

In our 45-minute workshops, we focus on a conservation topic which provides curriculum enrichment to a specific key stage. Workshops promote transferrable skills which can be used across the curriculum, as well as inspiring environmentally beneficial action outside of the academic setting.

We **DO NOT** bring any live animals to any of our education workshops, due to the welfare implications for our animals.





# SINGLE WORKSHOPS

In preparation for the visit, the outreach team will organise a virtual planning meeting with you, to ensure that the workshop is accessible and appropriate for your learners. Lesson plans will be provided, alongside preparatory activities

## KS1/2 The penguin's plastic problem

Follow the penguins as they take a dive below the ocean surface to experience life under the sea, surrounded by the pretty, the peculiar and the plastic pollution!



## KS2/3 Lend a hand to orang-utans!

Travel through the layers of the rainforests of Borneo, discovering and protecting it's unique wildlife from the threat of deforestation.



## KS4+ What's right for rhinos

Conservation isn't always straight-forward, especially when it comes to the Black Rhino. Test your debate skills and prepare to have your opinions challenged as you discuss some controversial conservation topics.



Post-visit resources and activities are provided to encourage learners to continue to develop their understanding and curiosity through independent, self-led learning.

# SINGLE WORKSHOPS



Our workshops can be booked individually for a single class, or group, of up to 34 learners. They run for **45 to 60 minutes** and can be delivered in any classroom or venue. Multiple workshops can be booked back-to-back, allowing for multiple classes or groups to experience the workshops.

Subject to availability, up to five workshops can be booked per day.

## FULL DAY

Five, one-hour workshops  
for five classes

**£250**

## HALF DAY

Three, one-hour workshops  
for three classes

**£150**

## WORKSHOP PRICES

Prices are subject  
to VAT

## 2 HOURS

Two, one-hour workshops  
for two classes

**£135**

## 1 HOUR

One-hour workshops  
with one class

**£120**



Please note, prices for bespoke bookings may vary



# HOW TO BOOK

If you are interested in booking outreach workshops, please email:

**[outreach@twycrosszoo.org](mailto:outreach@twycrosszoo.org)**

Once your booking/membership has been confirmed, the team will contact you to book in a pre-visit, planning meeting. This will be over Zoom or Telephone and will be used to finalise the details of the visit(s). As well as discussing how the booking can be tailored, to ensure that the benefit for the learners is maximised.

## Careers

Our outreach officers are available to attend careers fairs and to deliver careers workshops to all ages.

## Bespoke Bookings

If you would like to book a workshop which is not listed, please get in touch via **[outreach@twycrosszoo.org](mailto:outreach@twycrosszoo.org)** to discuss availability. Bespoke bookings are available for learners of all ages, except for EYFS, and can be tailored to individually suit your learners' needs. For example, this may include changing the timings or content of the workshop.

## Important information

- No live animals are used in any of our workshops.
- When booking, please inform the outreach team whether or not the venue of the workshop(s) has access to equipment such as a projector or whiteboard.
- Bookings that will take place further than 30 miles from Twycross Zoo may be charged additional travel expenses.
- T&C's are provided in the booking documents.
- There must be available parking at the site, as there is a number of props and artefacts that will need to be transported from the vehicle.
- When booking multiple workshops in a single day, they must be booked back-to-back within the timetable.

